

# SKID STEER BULL HOG®

## DAILY STARTUP GUIDE

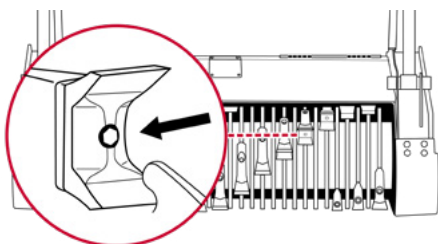
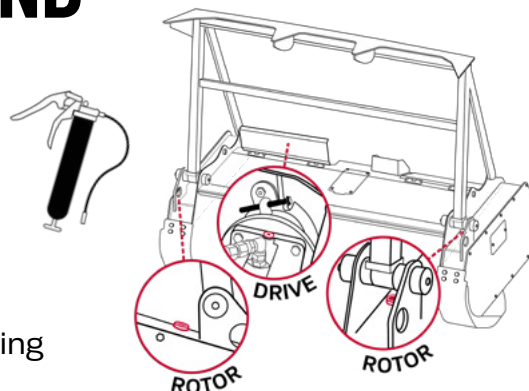
FECON®

# 01

## MULCHER WALKAROUND

### Daily Mulcher Maintenance

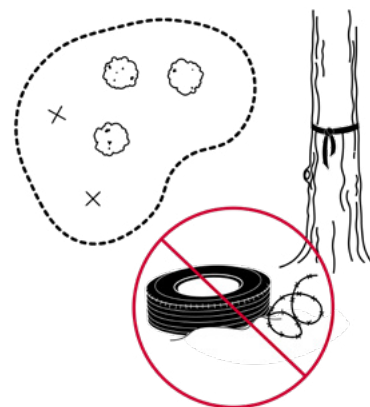
- Grease rotor bearings.
  - 1 pump for every 1 hour of running
- Grease drive bearing.
  - 1-2 pumps for every 50 hours of running



- Check for loose hardware
- Check for missing or damaged tools
  - Sharpen Knives if applicable
- Clean machine

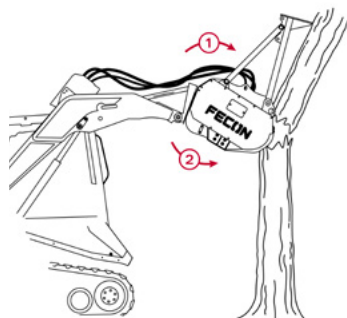
### Site Check

- Clearly mark perimeter of site
- Based on job requirements, mark trees to be kept
- Remove/mark non-vegetation
- Site safety discussion and walk through



# 02

## OPERATING TECHNIQUES

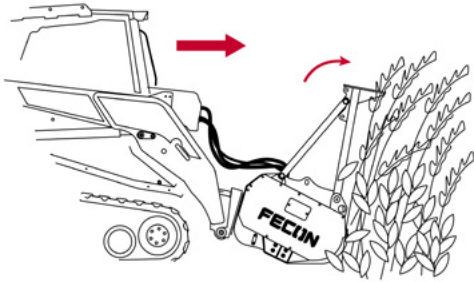


### Standing Vegetation

- Lift mulcher high to expose rotor and cut top of tree
- Rotate head during cutting to allow push bar to guide vegetation after it's cut
- Lower head as work allows

# 02

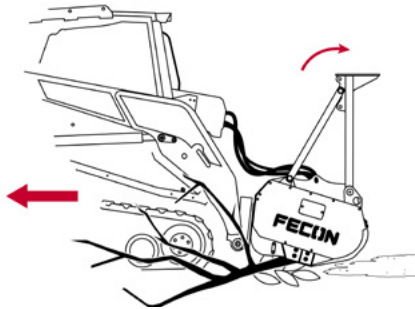
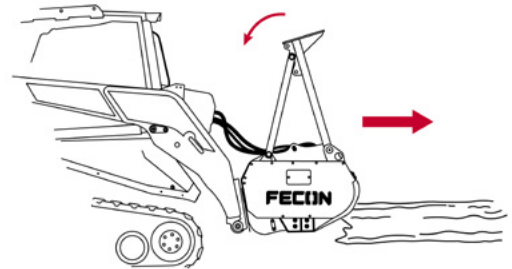
## OPERATING TECHNIQUES (CON'T)



### Forward Mulching

- Tilt head forward to push over overgrowth and guide smaller material to the rotor

- Tilt head backwards to process large, felled material
  - Travel speed will vary depending on size of material



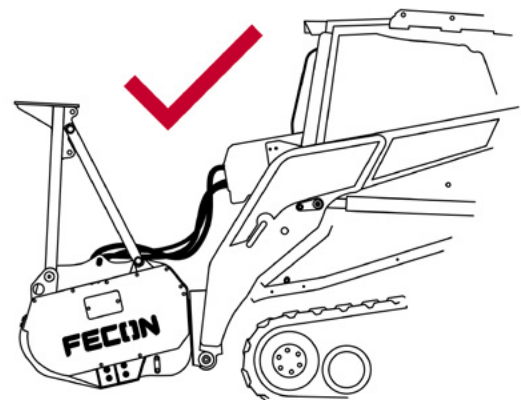
### Back Dragging

- Once vegetation is felled, rotate head forwards until the chains are just off the ground
- Traveling backwards as work allows

# 03

## MACHINE START UP

- Full Throttle
- Engage high flow
- Ready to mulch



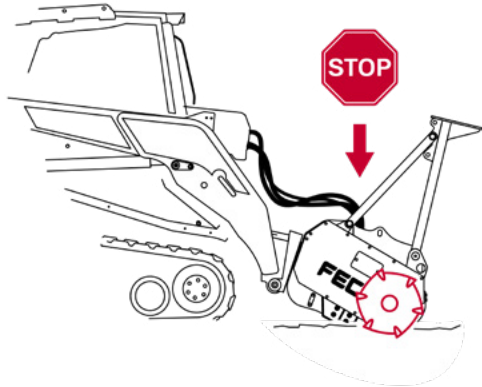
### REQUIRED

Operator's cab must be protected with a properly maintained 1/2" polycarbonate (or equal) door. Need one for your unit? Contact your local Fecon dealer or visit [FECON.COM/ACCESSORIES](http://FECON.COM/ACCESSORIES).



# 04 MACHINE SHUT DOWN

**WARNING!** Always stop rotor before exiting cab.

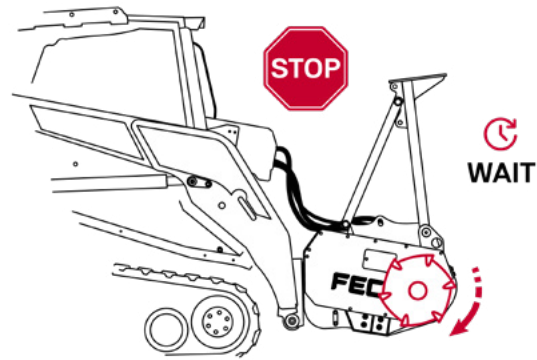


## How To Stop Rotor With Soil/Stump

- Lower the engine speed to idle
- Shut off the mulcher circuit
- Push the rotor into soil or a stump until rotor stops

## How To Stop Rotor With No Stump/Soil

- If there is no place to stop the rotor, wait for the rotor to stop before exiting the cab



**CONTACT WITH MOVING ROTOR CAN CAUSE SERIOUS INJURY OR DEATH. DO NOT EXIT THE VEHICLE BEFORE THE ROTOR STOPS.**

DSG\_052022v1

## KEEP LEARNING

Check out our growing library of quick tips and tutorials for maintaining your Fecon equipment.

[FECON.COM](http://FECON.COM)

