

**THE PERFECT  
PARTNER**

**FECON®**



**STANDARD FLOW**

[fecon.com](http://fecon.com)

800 528 3113

[sales@fecon.com](mailto:sales@fecon.com)

+1 513 696 4430

Whether you are buying, renting, or servicing your mulching equipment, FECON has solutions that focus on your success. Operator driven design with a global network that is woven into every product.

- Operators cab must be protected with both properly maintained 1/2" Polycarbonate Door Glass (or equal) and Falling Object Protection.
- Certain guarding and features may have been removed for illustrative purposes, always run with proper guarding.
- Weights may vary based on options.
- Specifications subject to change without notice.
- Photographs may have been altered for marketing purposes.
- Always insure that your carrier manufacturers safety features (including Falling Object Protection, and Roll-Over Protection) meet your job safety requirements.
- SAFETY IS THE RESPONSIBILITY OF THE OPERATOR.
- Pictures may contain optional accessories

SFR\_071322

**STANDARD FLOW**

**FECON®**



**FORESTRY  
MULCHERS**

**FECON.COM**

**800 528 3113**



# 50" STANDARD FLOW MULCHER SPECIFICATIONS

GENERAL		
Model	RK5015	RK6015
Working Width	50"	60"
Overall Width	61"	71"
Weight	1,340 lbs	1,465 lbs
Flow Range	17-30 gpm	17-30 gpm
Max Pressure	4,000 psi	4,000 psi
Max Horsepower	75 hp	75 hp
Number of Tools	22	26
Rotor Diameter	15"	15"
Rotor Speed	2400 rpm	2400 rpm
Rotor Bearing Size (mm)	ST65	ST65
Motor(s)	1 x 45V	1 x 45V

# MAKE IT HAPPEN

## ON THE FARM

- ✦ Clearing crop perimeters allows for additional sunlight exposure and results in more productive crop growth
- ✦ Clear fence rows to keep machinery from being damaged during planting, maintenance or harvest
- ✦ Complete vegetation removal down to ground level to avoid potential livestock injuries

## RESIDENTIAL LANDSCAPING

- ✦ General vegetation management
- ✦ Fire prevention - create "defensible space"

## RENTALS

- ✦ Easy to transport mulching head without CDL
- ✦ Adaptable to any standard flow SSL/CTL

## FEATURES

- ✦ Efficiently mulch up to 5" material with the split ring rotor with knife tools
- ✦ Compact body design ensure carrier is agile in the woods
- ✦ Hinged motor cover to easily service key components

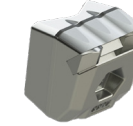
## TOOL OPTIONS

### Cubit Knife standard



Double sided and easily flipped for a brand new cutting edge. This tool is faster at cutting, resulting in a finer finished product. A tapered tool body allows chip material to flow efficiently.

### Cubit Carbide



Versatile tool for shredding material and improved durability. Ideal for applications that require ground engagement.

## ADD ONS

### CONSIDER FECONS® HYDRAULIC COOLER

Designed to be mounted on CTL and Skid Steer rooftops, our hydraulic cooler enhances the performance of the carrier by maintaining the hydraulic fluid at optimal temperature and viscosity.

### FECON® 1/2" POLYCARBONATE DOOR WINDSHIELD

Form-fit 1/2" Polycarbonate Windshield required for mulching applications. Our replacement windows are formed to duplicate the OEM glass shape.

