

## STUMPEX®



- High torque, low RPM stump grinding bit
- Two-speed hydraulic motor
- Durable 3/4" AR500 Steel Cutting Blades
- Bore 28" stumps in single pass
- 12 - 20 Ton
- 40 - 65 gpm
- 2,000 lbs

## TREE SHEAR



- Shear, lift, bunch, and carry multiple trees
- Cut up to 15" material
- Dual AR400 steel blades
- Accumulator Arm Standard
- 15 - 23 gpm
- 1900 lbs

## STUMP HOGS



- Extend your reach, for those stumps that cannot be safely accessed with a traditional stump grinder
- High speed 36" grinding wheel with 15 carbide tools
- Contains debris for safety
- Full view of stump/disk during operation
- 40-120 gpm
- 2,500 lbs



# EXC ATTACHMENTS

# FECON®



# FORESTRY ATTACHMENTS

## FECON.COM

## 800 528 3113

## EXCAVATOR ATTACHMENTS

fecon.com  
800 528 3113

sales@fecon.com  
+1 513 696 4430



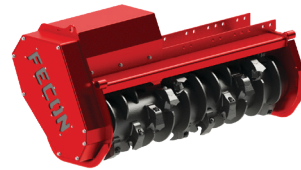
Whether you are buying, renting, or servicing your mulching equipment, FECON has solutions that focus on your success. Operator driven design with a global network that is woven into every product.

- Operators cab must be protected with both properly maintained 1/2" Polycarbonate Glass (or equal) and Falling Object Protection.
- Certain guarding and features may have been removed for illustrative purposes, always run with proper guarding.
- Weights may vary based on options.
- Specifications subject to change without notice.
- Photographs may have been altered for marketing purposes.
- Always insure that your carrier manufacturers safety features (including Falling Object Protection, and Roll-Over Protection) meet your job safety requirements.
- SAFETY IS THE RESPONSIBILITY OF THE OPERATOR.
- Pictures may contain optional accessories

# BULL HOG® MULCHERS

## 5-10 TON EXCAVATOR

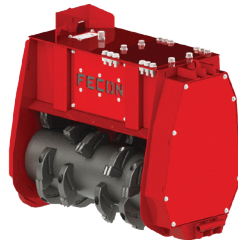
FMX36 & FMX50



- 12 - 40 Flow Range (gpm)
- 36" and 50" cutting widths
- 850 lbs - 1,050 lbs
- Efficiently mulch up to 5" material
- Rated to 4,000 PSI
- Variable Displacement Motor standard

## 8-15 TON EXCAVATOR

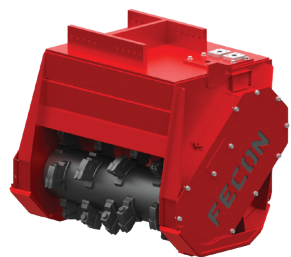
CEM36



- 17 - 40 Flow Range (gpm)
- 36" Cutting width
- Efficiently mulch up to 6" material
- Rated to 6,000 PSI
- Variable Displacement Motor standard

## 12-20 TON EXCAVATOR

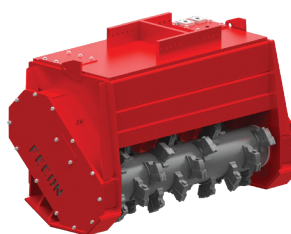
BH47EXC & BH62EXC



- 27 - 75 Flow Range (gpm)
- 37" and 50" cutting widths
- 2,400 lbs - 2,750 lbs
- Efficiently mulch up to 8" material
- 2 rotor choices: FGT or DCR
- Rated to 6,000 PSI
- Variable Displacement Motor standard

## 15-45 TON EXCAVATOR

BH40EXC, BH80EXC & BH200EXC



- 30 - 150 Flow Range (gpm)
- 36", 50" & 56" cutting widths
- 3,150 lbs - 5,500 lbs
- Efficiently mulch up to 10" material
- 2 rotor choices: FGT or DCR
- Rated to 6,000 PSI
- Variable Displacement Motor standard

**DURABILITY  
PERFORMANCE  
VERSATILITY**

# ROTORS



## FGT

Versatile smooth drum rotor system with tooling options for various application. Lacing pattern maximizes energy transfer into the material while optimizing tool wear.

### Double Carbide standard



The perfect balance of performance, wear life, and durability, the Double Carbide is the standard tool offered in FGT rotors to work in a wide range of applications.

### Viking Sword®



Double sided and easily flipped for a brand new cutting edge. This tool is faster at cutting, resulting in a finer finished product. A tapered tool body allows chip material to flow efficiently.

### High Abrasion



Carbide wear plates are added to the body of the Standard Double Carbide tool, extending useful life in highly abrasive conditions by slowing wear to the body.

### Stone Tool



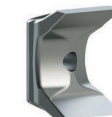
Ideal for areas where rock cannot be avoided, the FGT Stone Tool provides superior durability and wear life in more severe conditions.



## DCR

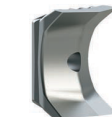
Depth Control Rotor limits tool bite which creates consistent chip sizing and less HP draw from carrier. Ideal for stringy/fibrous material or when a finer finished product is required.

### Viking Axe® standard



Double sided and easily flipped for a brand new cutting edge. The Viking Axe has a thick knife edge optimized for cutting stringy and fibrous vegetation.

### Viking Sword®



Double sided and easily flipped for a brand new cutting edge. This tool is faster at cutting, resulting in a finer finished product. A tapered tool body allows chip material to flow efficiently.



## FMX

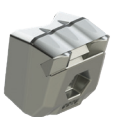
Split ring rotor with knife tools designed to efficiently mulch while maintaining higher rotor RPMs.

### Cubit Knife standard



Double sided and easily flipped for a brand new cutting edge. This tool is faster at cutting, resulting in a finer finished product. A tapered tool body allows chip material to flow efficiently.

### Cubit Carbide



Versatile tool for shredding material and improved durability. Ideal for applications that require ground engagement.

Model	EXC Size (Metric Ton)	Working Width	Overall Width	Approx Weight	Approx Flow Range	FGT Tools	DCR / Cubit Tools
FMX36	5 - 10 T	36"	44"	850 lbs	12 - 40 gpm	-	18
FMX50	5 - 10 T	50"	58"	1050 lbs	12 - 40 gpm	-	22
CEM36	8 - 15 T	36"	47"	1450 lbs	17 - 40 gpm	18	14
BH47EXC	12 - 20 T	37"	50"	2400 lbs	27 - 50 gpm	18	14
BH62EXC	12 - 20 T	50"	63"	2650 - 2750 lbs	27 - 75 gpm	24	20
BH40EXC	15 - 45 T	36"	51"	3150 - 3250 lbs	30 - 75 gpm	18	14
BH80EXC	20 - 45 T	56"	71"	3950 - 4300 lbs	38 - 150 gpm	30	22
BH200EXC	20 - 45 T	59"	77"	5375 - 5500 lbs	40 - 150 gpm	30	28